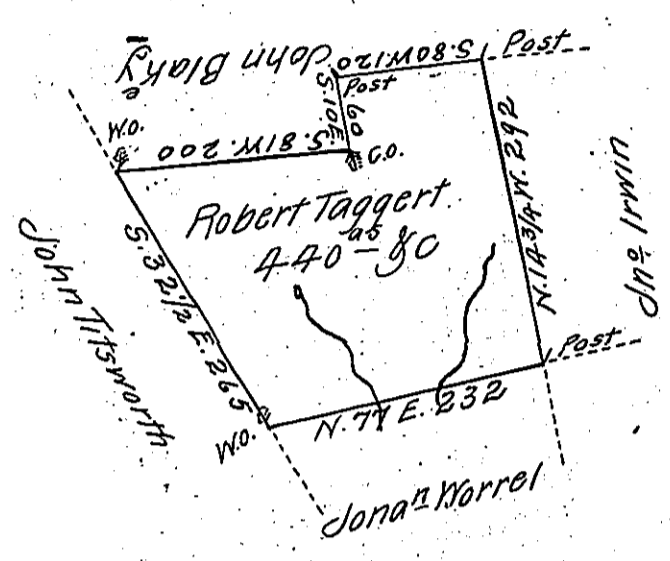


Sug. Leaf -
LUZERNE.



A Draft of a tract of land Called _____ Situate on the Waters of Nescopeck
 Creek in the County of Luzerne Containing four Hundred & forty Acres &
 Allow^e Surv^d for Rob^t Taggart the 1st day of October 1793 by Virtue of a
 Warrant dated the 13th day of June 1793

by W^m Gray D. S.

To Daniel Brodhead Esq^r }
 Surv^r Gen^l }

IN TESTIMONY that the above is a copy of the original remaining on file in
 the Department of Internal Affairs of Pennsylvania, made
 conformably to an Act of Assembly approved the 16th day of
 February, 1833, I have hereunto set my Hand and caused
 the Seal of said Department to be affixed at Harrisburg,
 this Thirteenth day of December 1910

Mary Howell
 Secretary of Internal Affairs.